

Basic User Guide for Vehicle Cameras

Please read the instructions prior to use.



- Do not use this device in the rain or in wet conditions as it may be damaged by water ingress.
- Do not use chemical cleaners on the screen or the case as this may damage the device.
- Use only the included USB charging cable to charge the internal battery.
- Ensure that the battery is sufficiently charged before use as low power may lead to damage either to this device or the device under test.



1. Test a Camera

1.1 Insert the test cable into the USB socket on the top of the tester. The test cable has a USB plug on one end and two RCA plugs and a DC power socket on the other.



1.2 The RCA plug with the Yellow ring is for CVBS cameras. The RCA plug with the Red ring is for AHD cameras.

Connect the required RCA plug to the 4 pin adaptor included and the DC power plug to the socket of the adaptor.



CVBS Connection



AHD Connection

1.2 Connect the camera to the 4 pin adaptor cable on the other end of the test cable and turn the power switch ON.

Note that OFF is far left, centre position is CVBS and far right is AHD.

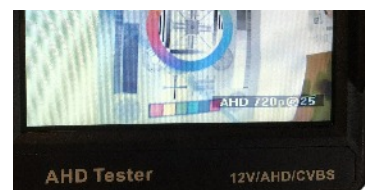


1.3 The LCD will display the image from the camera if it is working correctly.

With a CVBS camera there will be just a camera image shown.

With an AHD camera this will be shown as AHD with resolution of the camera at the lower right of the LCD as per the photo (right).

The tester does not detect the camera mode automatically so please ensure that the test cable is connected correctly for the type of camera being checked.



2. Charging

The charging input is the mini USB port next to the switch on the right side.

Plug the charging cable into the tester and connect to a USB charger, computer or other USB power source. The indicator will show when it is charging.

3. Troubleshooting & tips

- Always check that the tester is charged at least partially before commencing as the camera will be powered from the tester battery.
- Test a known working camera to familiarise yourself with the tester and its operation.
- Check the test cable connections if no image is shown.
- Check the switch position if no image is shown.
- Turn the tester Off after use to preserve the battery.
- For RCA cameras remove the adaptor and use the test cable directly. If power is required to the camera, a power adaptor may be required.